

# EXECUTIVE MASTER IN DIGITAL TRANSFORMATION AND INNOVATION LEADERSHIP





# CONTENTS

---

03	<a href="#">INTRODUCTION</a>
05	<a href="#">2024 GRADUATES' PROFILE</a>
06	<a href="#">GRADUATES' PROFESSIONAL BACKGROUND</a>
07	<a href="#">CURRENT CAREER PLACEMENT</a>
10	<a href="#">YOUR SUCCESS, OUR PURPOSE</a>
12	<a href="#">IE FOR LIFE</a>
14	<a href="#">INTERNATIONAL OFFICES</a>

## INTRODUCTION

IE Talent & Careers is committed to supporting students in their unique journeys of personal development and professional growth. With expert career advising and an extensive range of resources and tools, the team's dedication to their success is unmatched. Each year, our students demonstrate the value of this effort. With every accomplishment and accolade, and with every new role, career shift or entrepreneurial undertaking, they prove just how well-equipped they are to take on the world of work. And the graduating class of our **Executive Master in Digital Transformation and Innovation Leadership** is set to continue a long tradition of achievement and progress at the intersection of science and technology.

It's no secret that the STEM disciplines are in a state of flux. The impact of artificial intelligence and other emerging technologies is growing fast, disrupting industries and transforming how we live and work. Meanwhile, scientific breakthroughs in medicine, biotechnology, climate science, space exploration and more continue to push the limits of what's possible. Graduates of the **Executive Master in Digital Transformation and Innovation Leadership** are ready for this new landscape. Armed with a broad, in-demand skill set, they have what it takes to find innovative solutions that will reshape the future as we know it, and the knowledge, practical expertise and global network to make big things happen.

74%

of tech professionals prefer to work remotely, opening the field to skilled talent from anywhere in the world.

OVER  
800,000  
JOB POSITIONS

will be available to STEM workers by 2030.

54%

of organizations reported a tech skills shortage, demonstrating the opportunities in the market.



# IGNACIO GALINDO

EDTX

**NATIONALITY**

SPANISH

**CURRENT POSITION**

TECHNICAL DIRECTOR (CTO)

**POSITION BEFORE THE PROGRAM**

HEAD OF FIELD QUALITY EXCELLENCE, EMEA

The EDTX program at IE combines the best of both worlds: a hybrid format that blends online learning with immersive on-campus weeks, creating a strong sense of community and facilitating powerful networking opportunities.



# VARI MURERIWA

EDTX

**NATIONALITY**

SOUTH AFRICAN

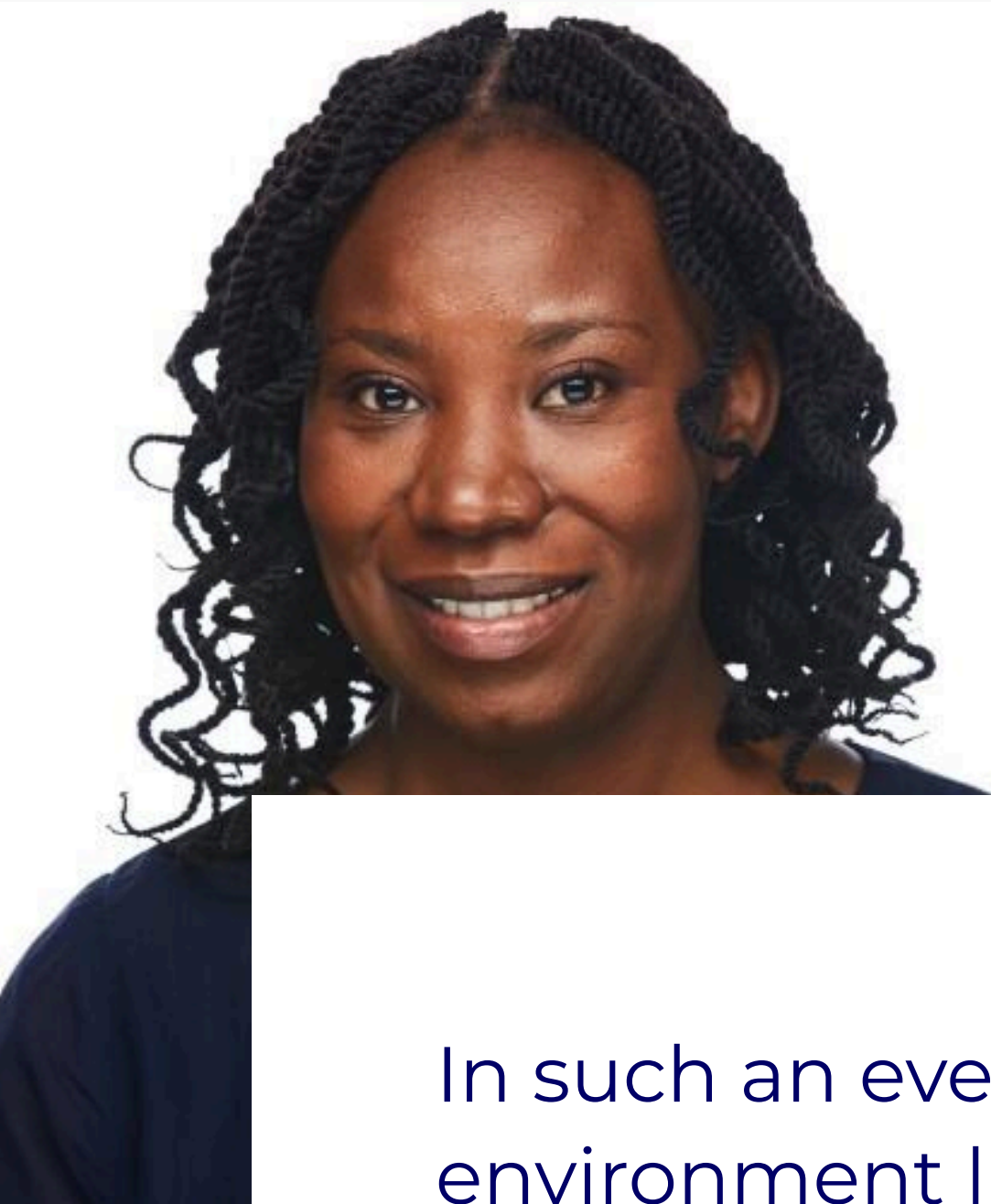
**CURRENT POSITION**

MANAGING DIRECTOR - HEALTH & PUBLIC SECTOR AT ACCENTURE

**POSITION BEFORE THE PROGRAM**

DIGITAL TRANSFORMATION LEAD - HEALTH & PUBLIC SECTOR AT ACCENTURE

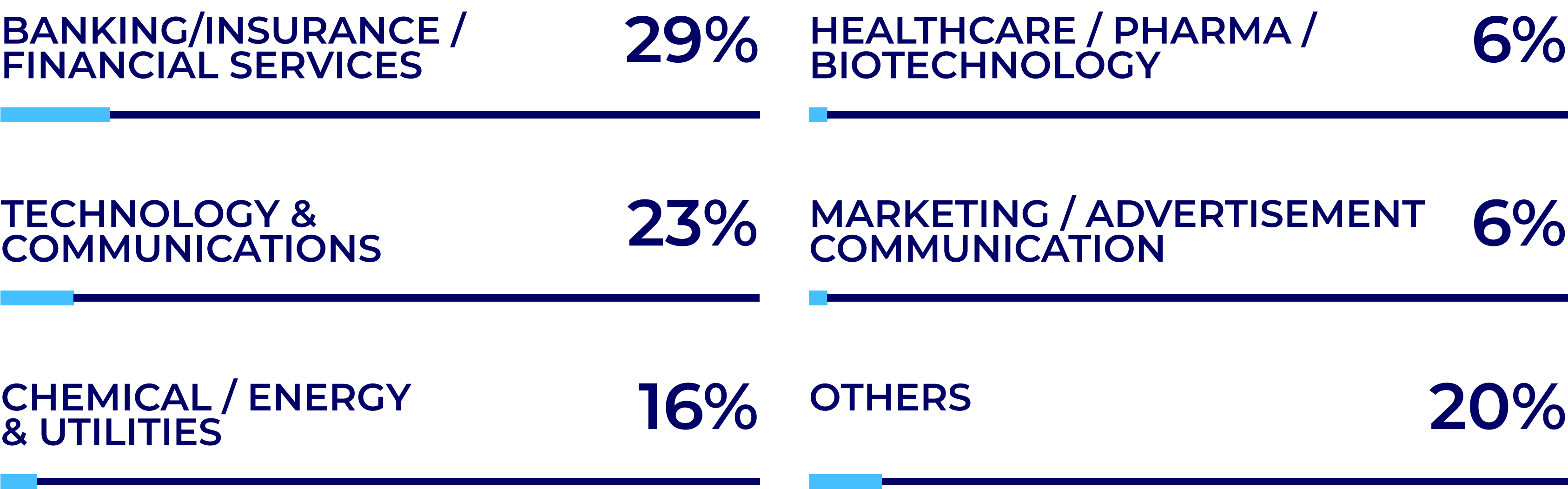
In such an ever-changing environment like digital transformation, it's very difficult to truly quantify what you know and don't know. How IE University structured the program was key.





# WHERE OUR STUDENTS WERE WORKING BEFORE STARTING THE PROGRAM

## INDUSTRY / SECTOR

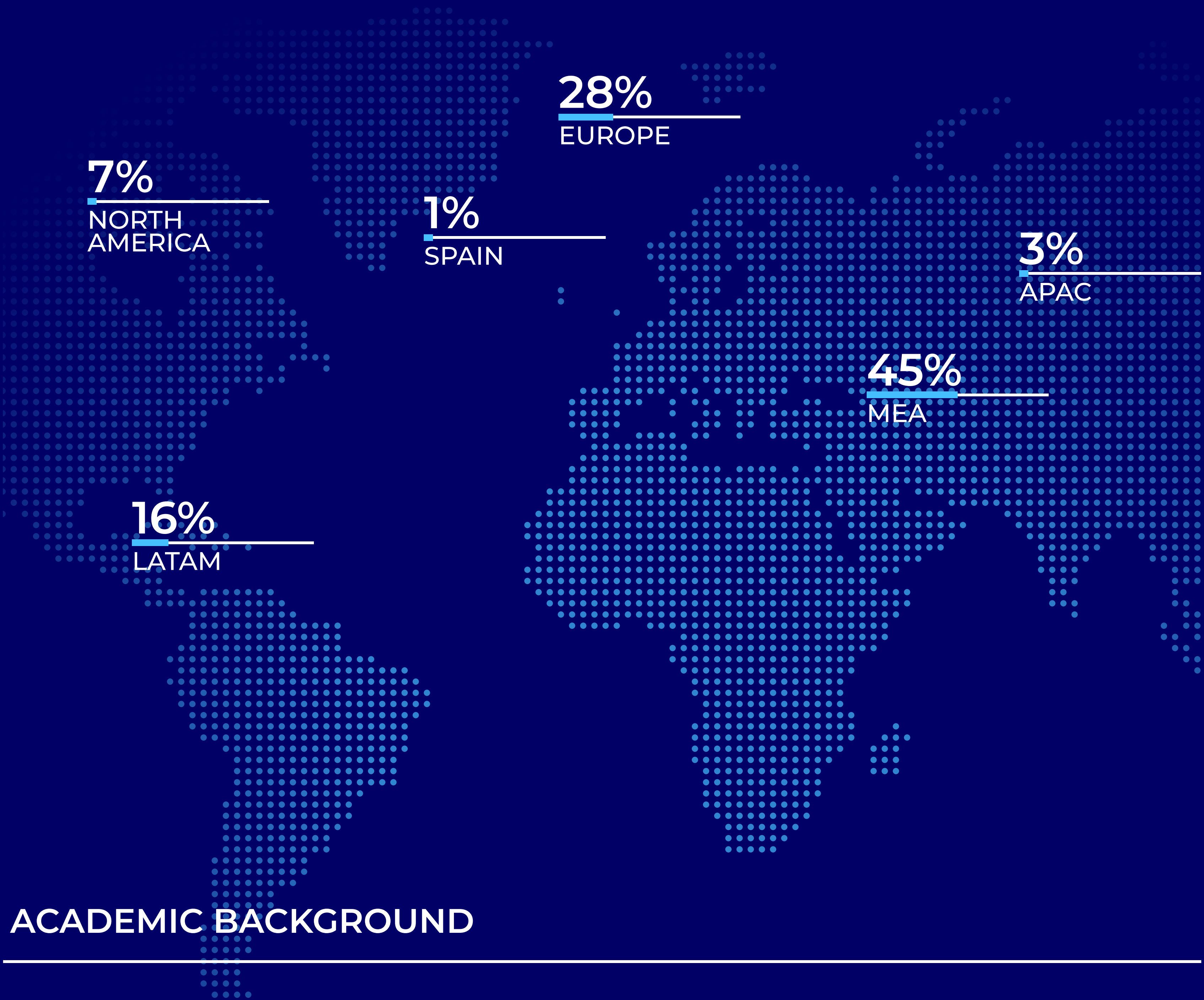


## COMPANIES REPRESENTED IN CLASS

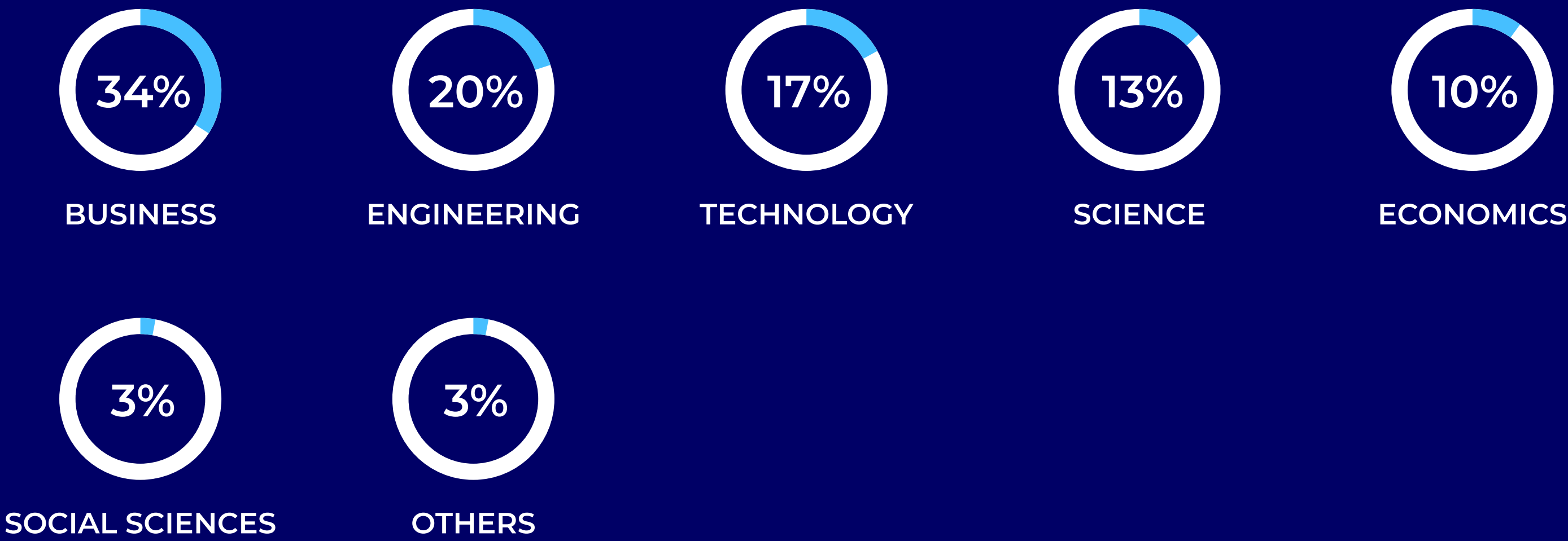




# 2024 GRADUATES' PROFILE



## ACADEMIC BACKGROUND

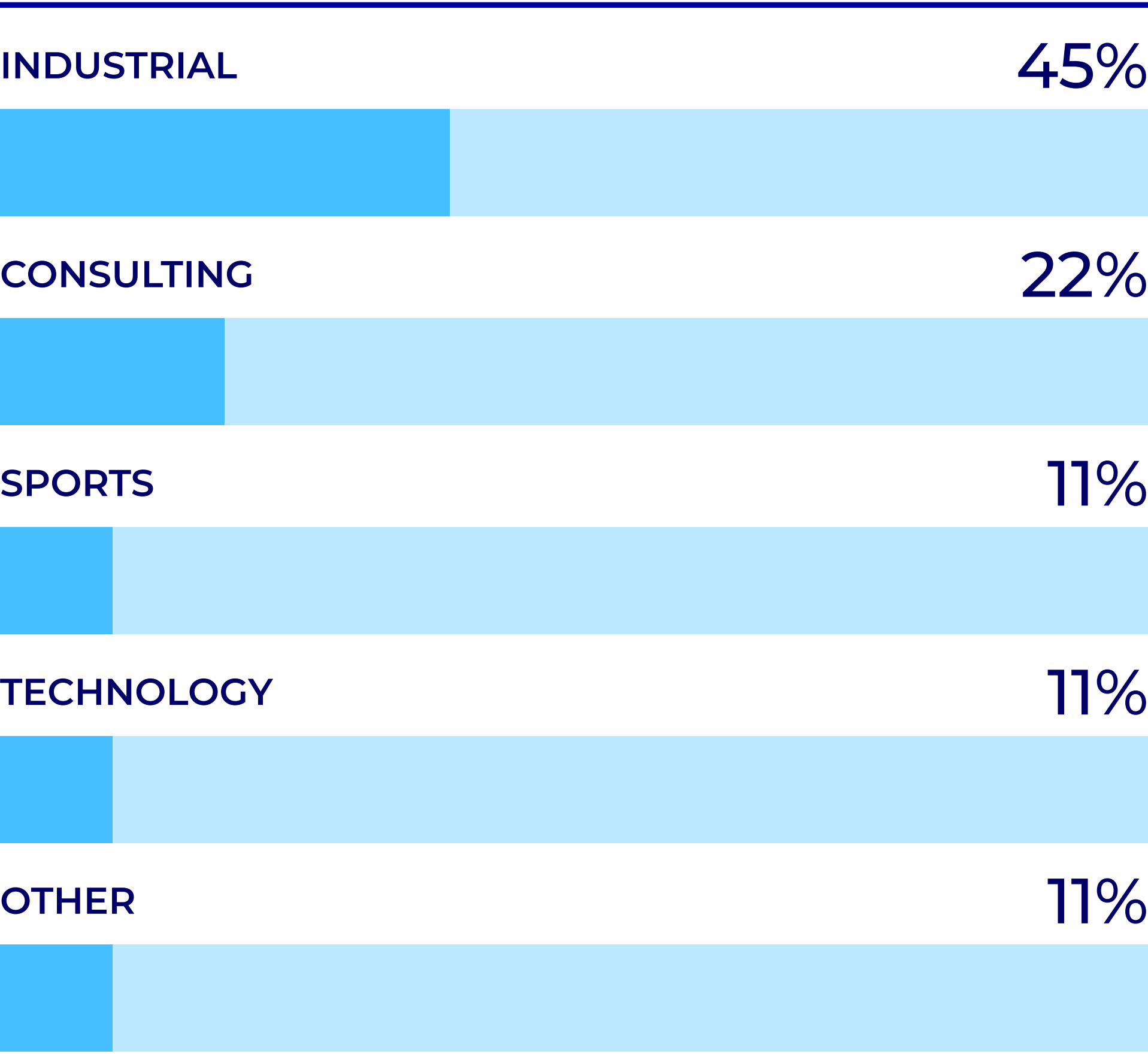






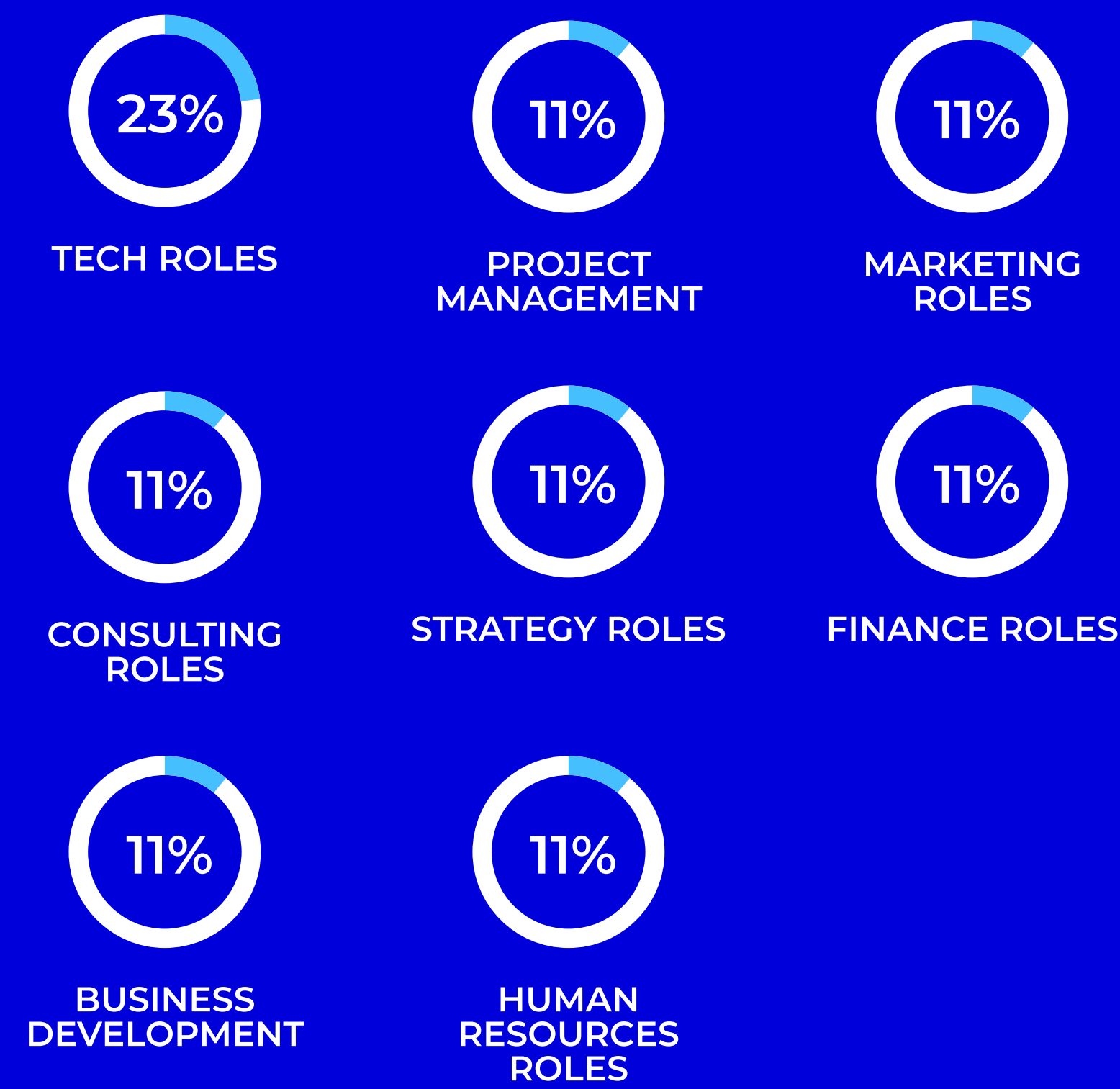
# WHERE OUR GRADUATES ARE WORKING NOW

## SECTOR

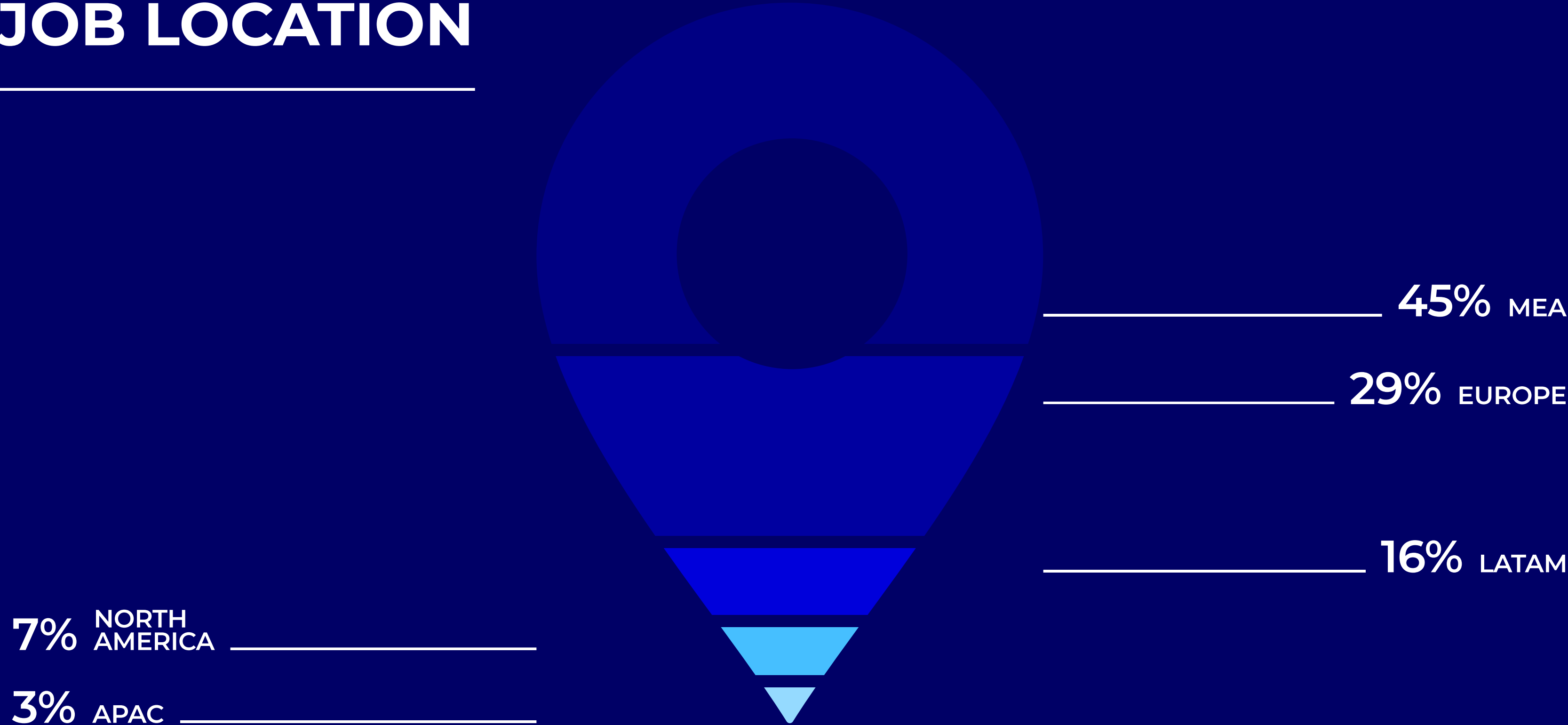




# FUNCTION



# JOB LOCATION





# TOP HIRING COMPANIES

 **TOYOTA**

**Aer Lingus** 

 **Capitole**  
Powered by Smart4

 **cargo.one**



 **Strategic Gears**  
Management Consultancy

 **Wesfarmers**

 **International Olympic Committee**

Job seekers who received a job offer within 3 months after graduation

56%

# JOB ROLE TITLES

**PARTNERSHIP GROWTH**

**BUSINESS ANALYST**

**DIRECTOR**

**FINANCE MANAGER**

**GAMES TECHNOLOGY INTEGRATION MANAGER**

**GENERAL CREATIVE DIRECTOR**

**M&E TRANSFORMATION PMO**

**PEOPLE TECH SR MANAGER**

**SPECIALIST DATA ANALYST**

**FOUNDER & CEO**

**VP OF OPERATIONS**

**EXECUTIVE HEAD DIGITAL SOLUTIONS**

**HEAD OF PRODUCT MANAGEMENT SOLUTIONS**





# YOUR SUCCESS, OUR PURPOSE

IE University is considered one of the world's leading universities by international journals such as Bloomberg Businessweek, Financial Times, The Economist, and The Wall Street Journal, and by international companies actively recruiting our graduates. By studying at IE University, students graduate with a brand recognized for its excellence among recruiters.

**Bloomberg  
Businessweek**

**FT** FINANCIAL  
TIMES

The  
Economist

WALL STREET  
JOURNAL

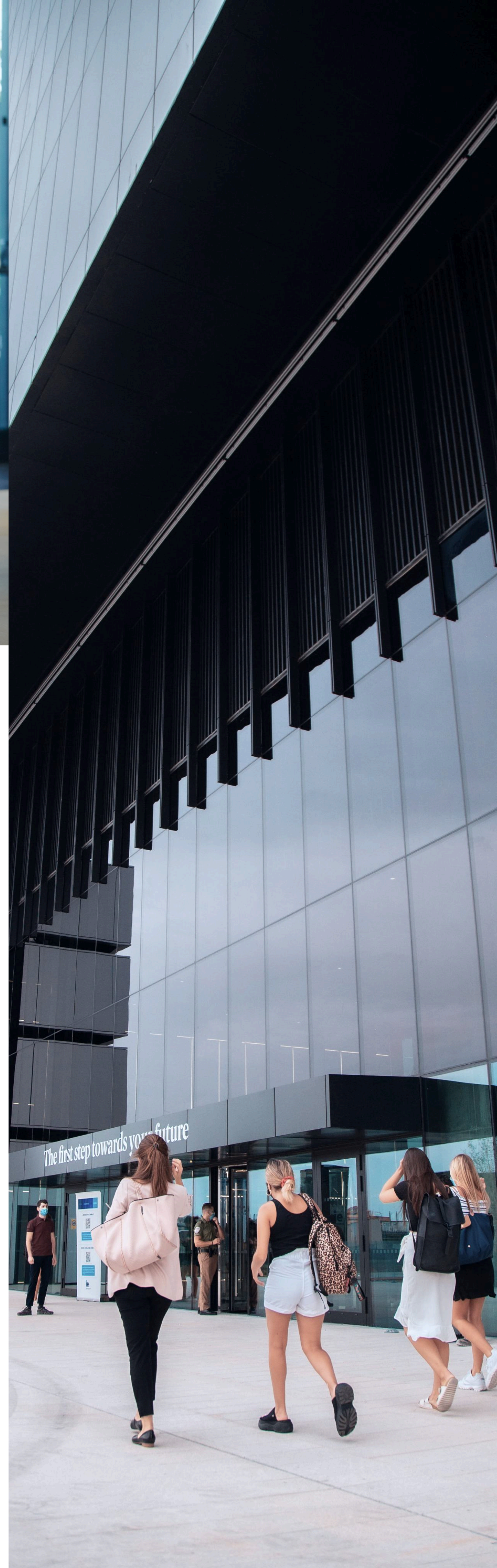
## WE'RE HERE TO HELP YOU KICK START YOUR CAREER

Our Talent & Careers Department's mission is to guide and empower our community of students and alumni in their career journey.

Our Career Discover Advisors help you unlock your potential through unique self assessment tools and methodologies.

Our industry experts explore with you market trends and professional paths that align with your profile and aspirations.

Our team works closely with more than 2,000 recruiting partners, with the constant aim to match and connect directly the right talent with the right need.







# OUR EVENTS

The **incredible variety** of our events allows **students to engage** with companies at a whole other level. We hosted more than 282 virtual and physical events with **recruiting partners**.

TALENT FORUMS

COMPANY PRESENTATIONS

INTERVIEWS AND ASSESSMENT CENTERS

BUSINESS COMPETITIONS

PANELS

WORKSHOPS

CONFERENCES

NETWORKING ACTIVITIES WITH IE CLUBS

WEBINARS

LIVESTREAMS

## MAKE THE MOST OF IT

During your time at IE University, you will meet with us throughout career education workshops and events, designed to help students land the job that's best for them.

Reach out to our dedicated Careers Team and we will assist you in defining your very own career strategy via personalized career advising sessions.

On the IE Career Portal, find a curated collection of resources and access exclusive job offers.

IE's bi-annual Talent Forum is the largest of our recruiting events. All attending companies are actively recruiting for positions matching IE profiles.



# VISITING COMPANIES

In the academic year we welcomed 300 recruiting partners on our on-campus facilities, including:

## TECH

facebook amadeus SAP  
Uber Telefonica

## FINANCE

S&P Global Santander Goldman Sachs AMERICAN EXPRESS

## CONSULTING

BAIN & COMPANY Capgemini BCG BOSTON CONSULTING GROUP  
OliverWyman Grant Thornton

## PHARMA

Abbott SANDOZ Bristol Myers Squibb

## FMCG / LUXURY / RETAIL

NIKE L'ORÉAL pepsi P&G Procter & Gamble  
IKEA ESSILOR COLGATE-PALMOLIVE Mars

KraftHeinz

## INDUSTRIAL / ENERGY

Schneider Electric Vestas bp DHL

## INTERNATIONAL DEVELOPMENT

UNITED NATIONS ADB ASIAN DEVELOPMENT BANK IMPACT HUB European Bank for Reconstruction and Development Dalberg

## REAL ESTATE / ARCHITECTURE AND DESIGN

AECOM Knight Frank CUSHMAN & WAKEFIELD

# 12,000

JOB OPPORTUNITIES

# 2,100

RECRUITING PARTNERS GLOBALLY



# ENHANCE YOUR ALUMNI BENEFITS

## ALUMNI PLUS

---



**1-hour Executive Career coaching** (online or face-to-face) and Career webinars.



**Up to 40 lectures** (online or face-to-face) with prominent IE professors.



**Online subscription** to El País, Expansión, El Mundo and the Wall Street Journal (valued at € 750).



**Speed-networking events and preferential pricing** to IE Alumni flagship events.

\*Included during 2 years upon graduation.

## CAREER BOOSTER

---

### PREMIUM ACCESS TO KORN FERRY ADVANCE PLATFORM WITH:

- Unlimited, personalized **1-to-1 coaching sessions**.
- Resume parsing analysis to **see how recruiters process your resume**.
- **AI-based interview preparation app**.
- **Premium access to GeniusMesh**, a confidential Executive MBA talent network of 20 top business schools and unpublished leadership roles.

\*Alumni Plus Membership required.

## LIFELONG LEARNING BOOSTER

---

**Access to one Executive Education short program or one High Impact Online Program** (list price up to €4,000).

**50% scholarship** for a second program or Executive Summer School.

\*Alumni Plus Membership required





# INTERNATIONAL OFFICES

---

## IE INTERNATIONAL DEVELOPMENT:

BUILDING COMMUNITY AND NETWORKING AROUND THE WORLD

Based in 30+ offices worldwide, our 150-strong recruitment staff search far and wide for top international talent. This begins a life-long relationship that lasts even after graduation. With over 5,000 events per year in more than 100 countries, our International

Development team provides support to our candidates, students and alumni.

[ATTEND ONE OF OUR EVENTS](#)

## CLOSE TO YOU, CLOSE TO COMPANIES

Close relationships with leading global companies and start-ups place us in the heart of corporate and entrepreneurial ecosystems. Join over 1,000 career-focused events, including industry-oriented conversations with IE experts, or take part in career fairs organized alongside IE Talent and Careers. Beyond the events, you can connect with top alumni or tap into local entrepreneurial ecosystems in your region, all the while benefiting from expert research on the future of the workplace.

## BENEFITS FOR OUR GLOBAL COMMUNITY:

IE EVENTS, MASTERCLASSES AND WORKSHOPS LED BY IE PROFESSORS

---

CORPORATE PARTNERSHIPS

---

VENTURE DAYS

---

NETWORKING AND SOCIAL EVENTS FOR ALUMNI AND STUDENTS

---

GLOBAL ALUMNI WEEKENDS

---

“GLOCAL” NETWORK

---

WORLDWIDE CONFERENCES

---

CAREER OPPORTUNITIES FOR ALUMNI AND STUDENTS

---

ALUMNI CLUBS

---

FIND US AT ONE OF OUR  
INTERNATIONAL OFFICES

[KNOW MORE](#)



# EXECUTIVE MASTER IN DIGITAL TRANSFORMATION AND INNOVATION LEADERSHIP

2024

CAREER REPORT

ie

BUSINESS SCHOOL