

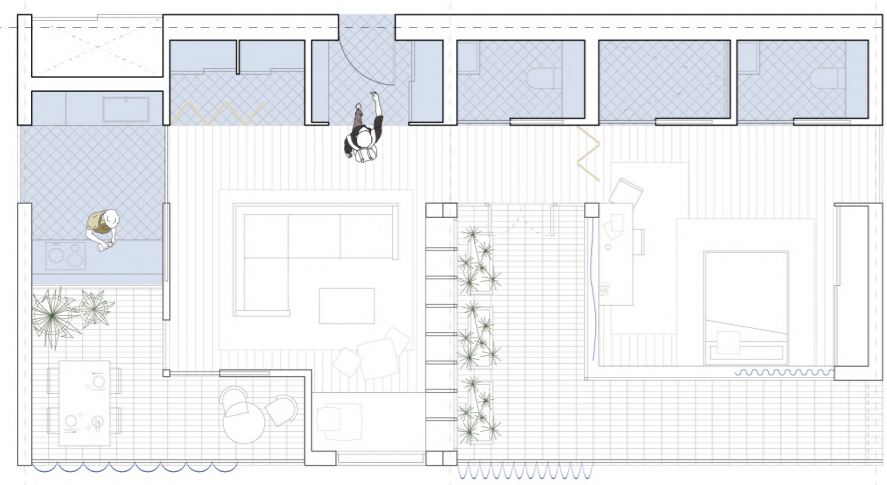
SOCIAL HOUSING IN FUENLABRADA

The project presented here was developed in the aftermath of the COVID-19 crisis. It called for the development of social housing in the city of Fuenlabrada, a lower-middle class city in the southern part of Madrid.

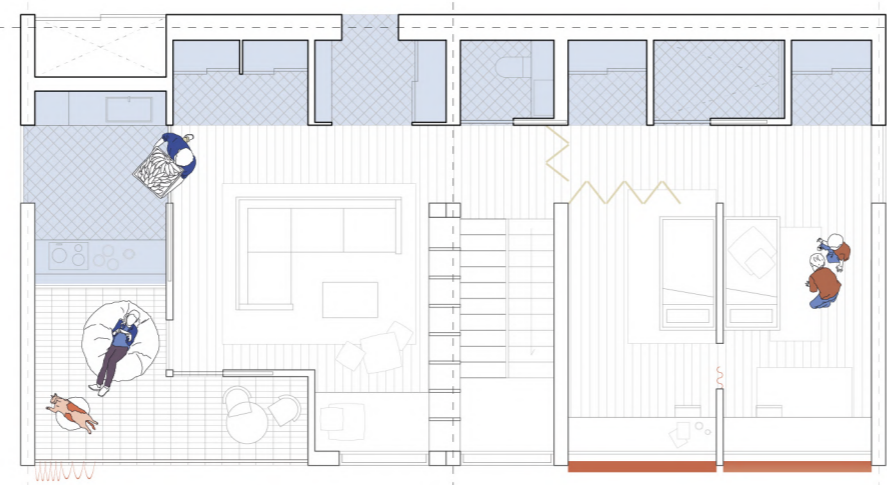
In addition to meeting the most basic aspects of a housing project, the statement called for the incorporation of tools that could potentially help to improve the habitability of low income homes in another future pandemic or confinement. These requirements guided the project towards four main objectives.

1. The creation of both, **public and private outdoor space**.
2. The development of a **system** that facilitates and enhances the use of the spaces.
3. The incorporation of **sustainable elements** that improve the efficiency of the project.
4. The design of a building with **identity**, a building in which the users feel as a "main character" and can actively participate in the spaces.

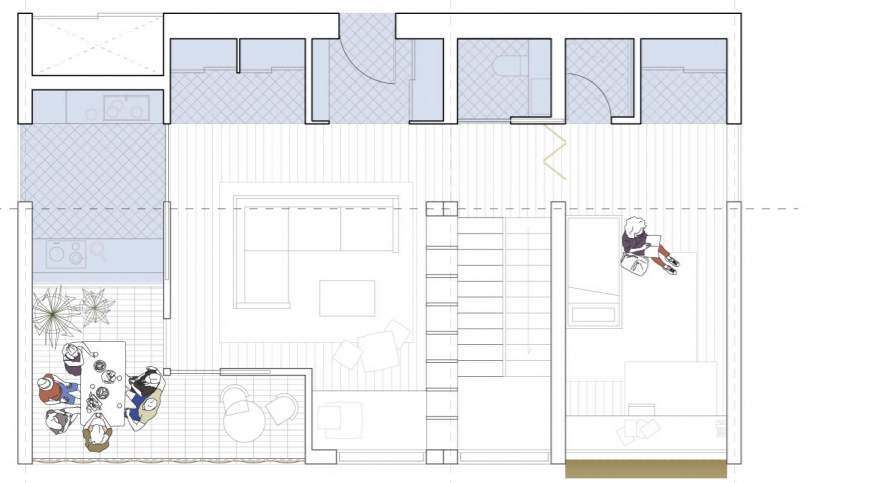
HOUSING UNIT 1
For up to 2 people.



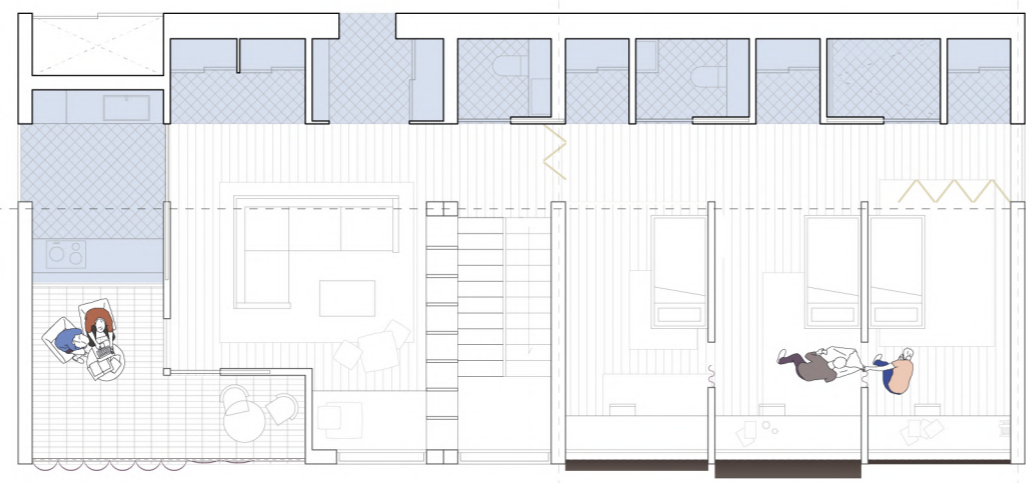
HOUSING UNIT 3
For up to 6 people.



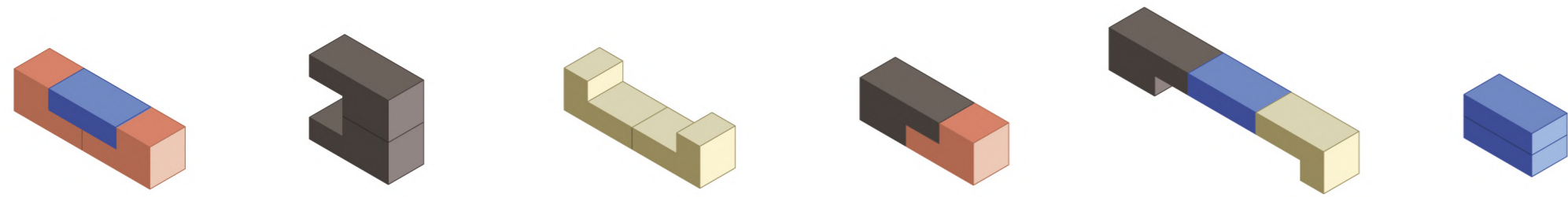
HOUSING UNIT 2
For up to 4 people.



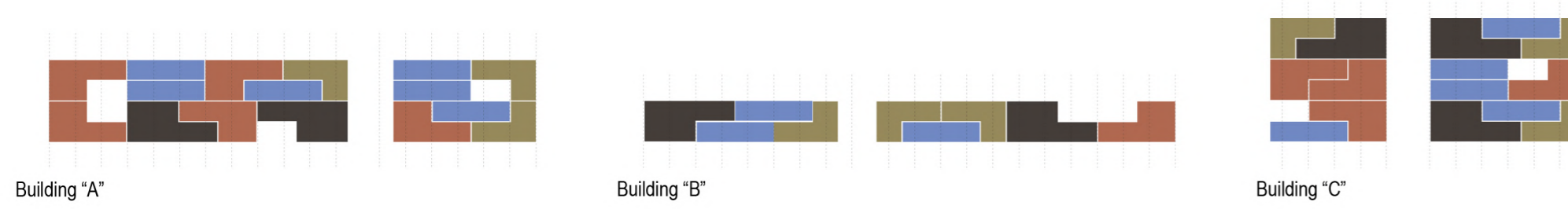
HOUSING UNIT 4
For up to 8 people.



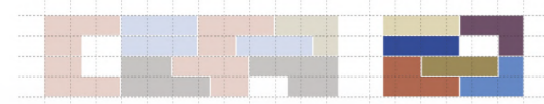
COMBINATION OF HOUSING UNITS
Possible unions.



DEVELOPMENT OF BUILDINGS
Combination of housing units vs. structural grid.

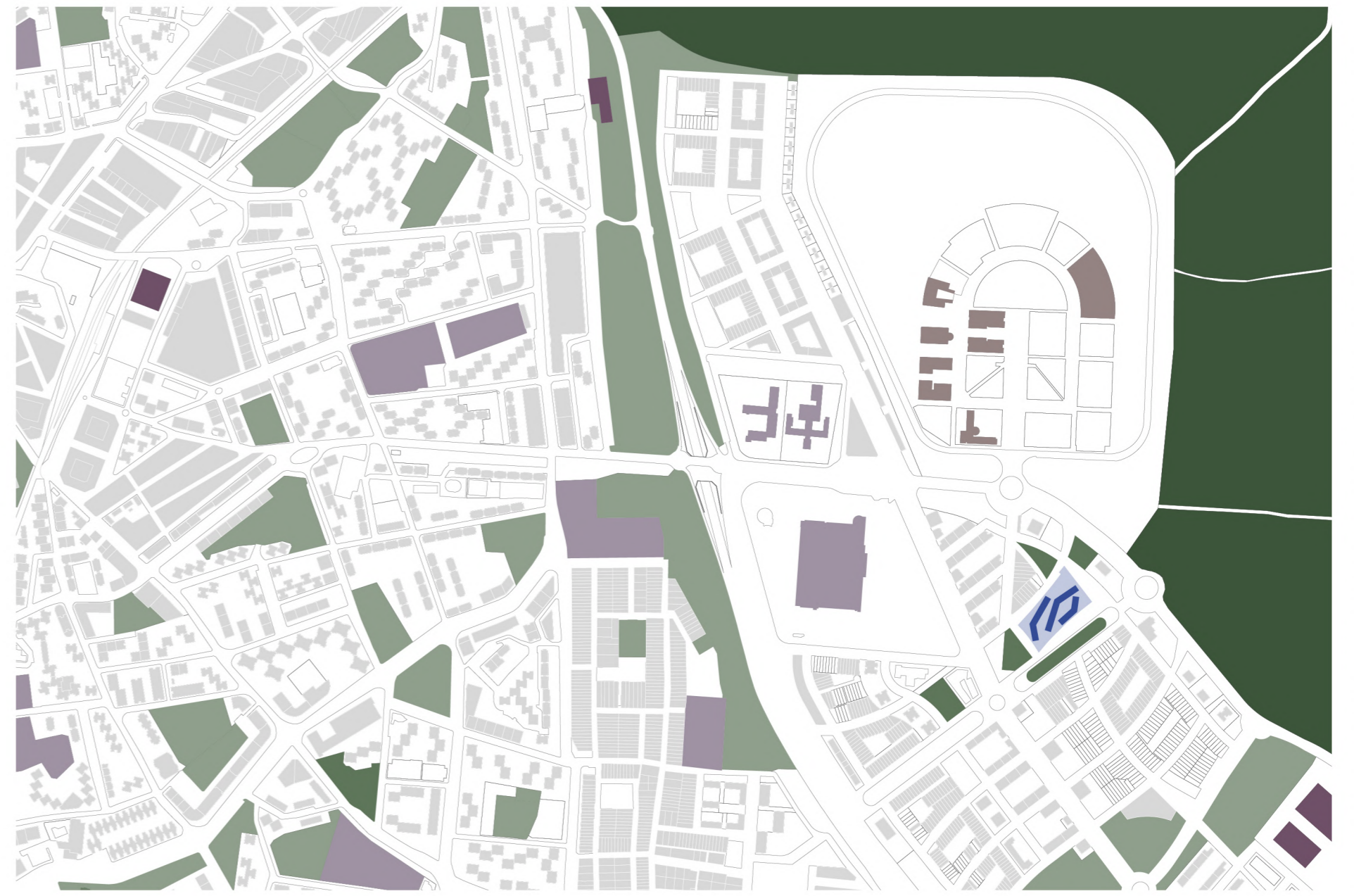


FASSADE BUILDING "A"



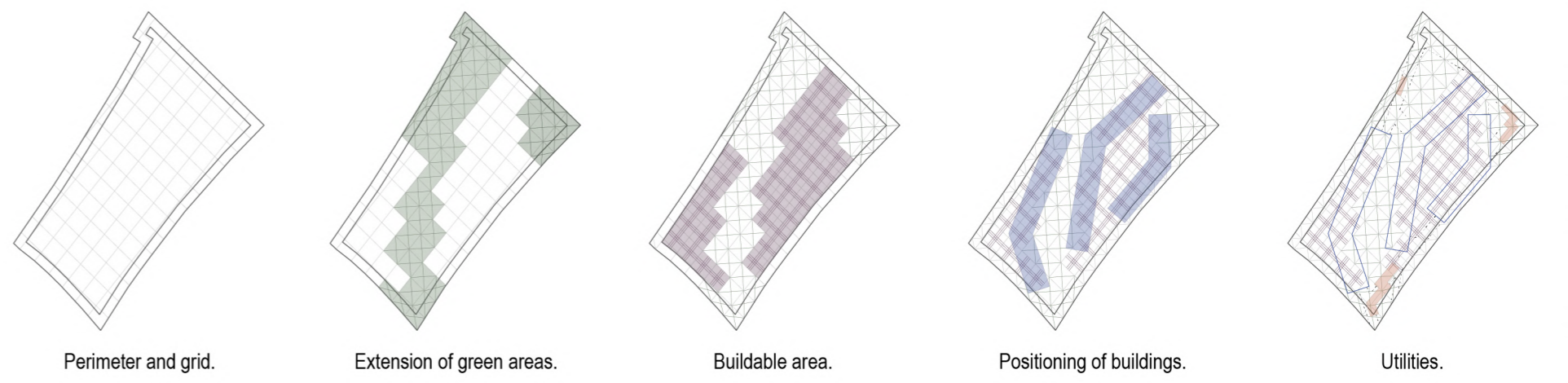
THE SURROUNDINGS

Fuenlabrada.



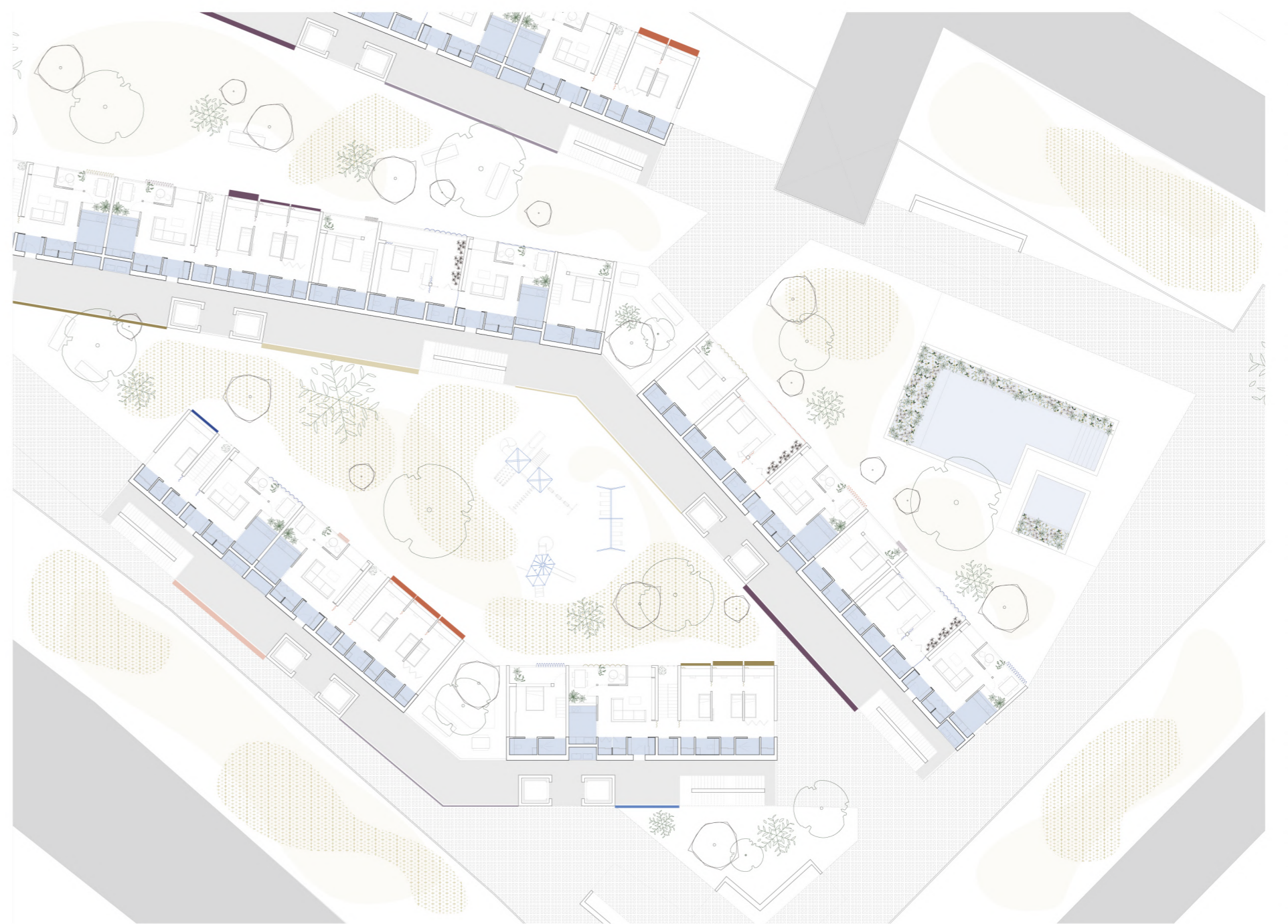
SITE ANALYSIS

Positioning of buildings.

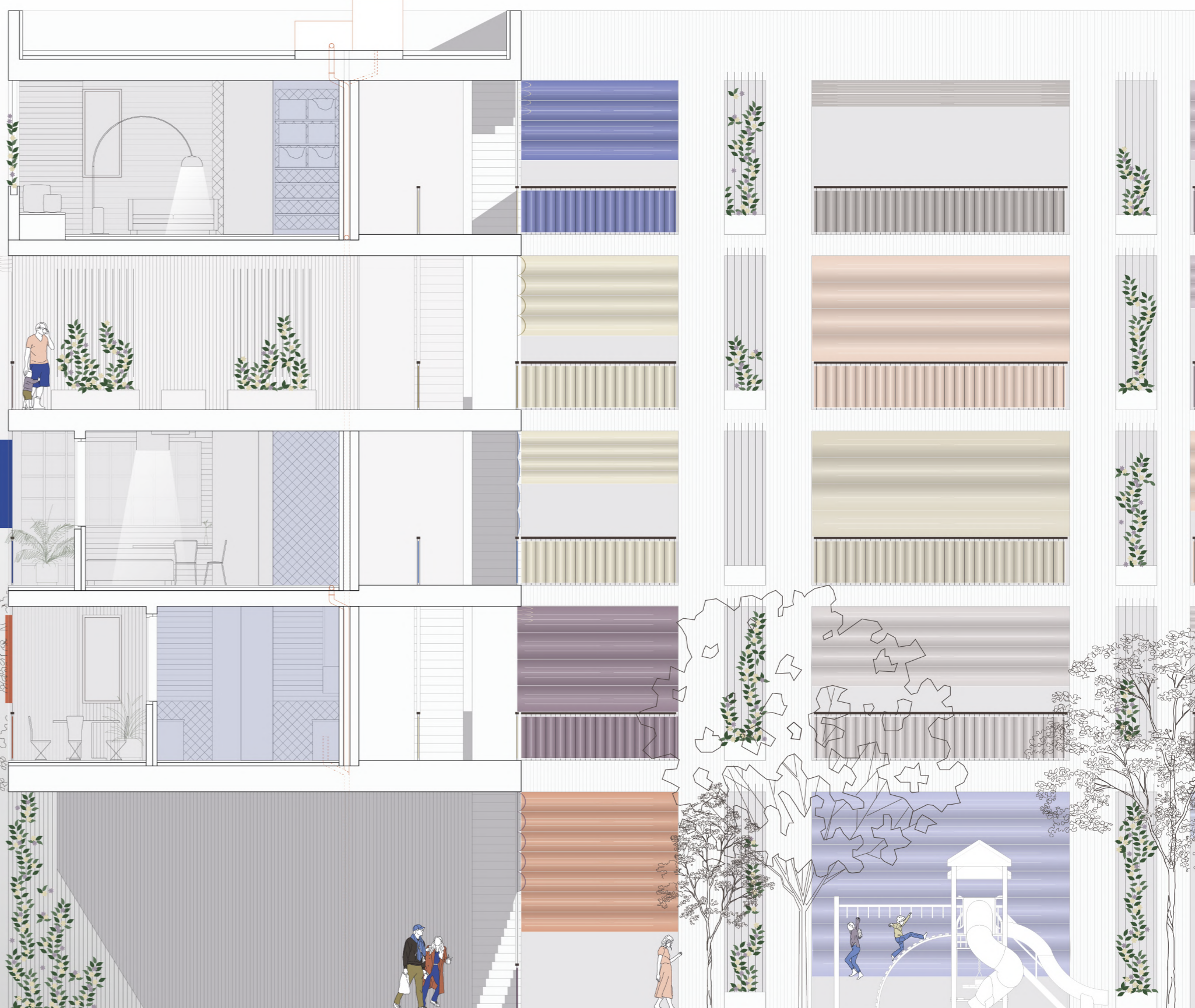
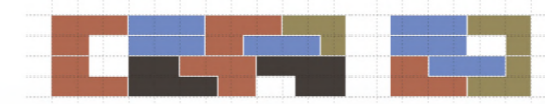


BUILDING PLANS AND SURROUNDINGS

Combination of housing units

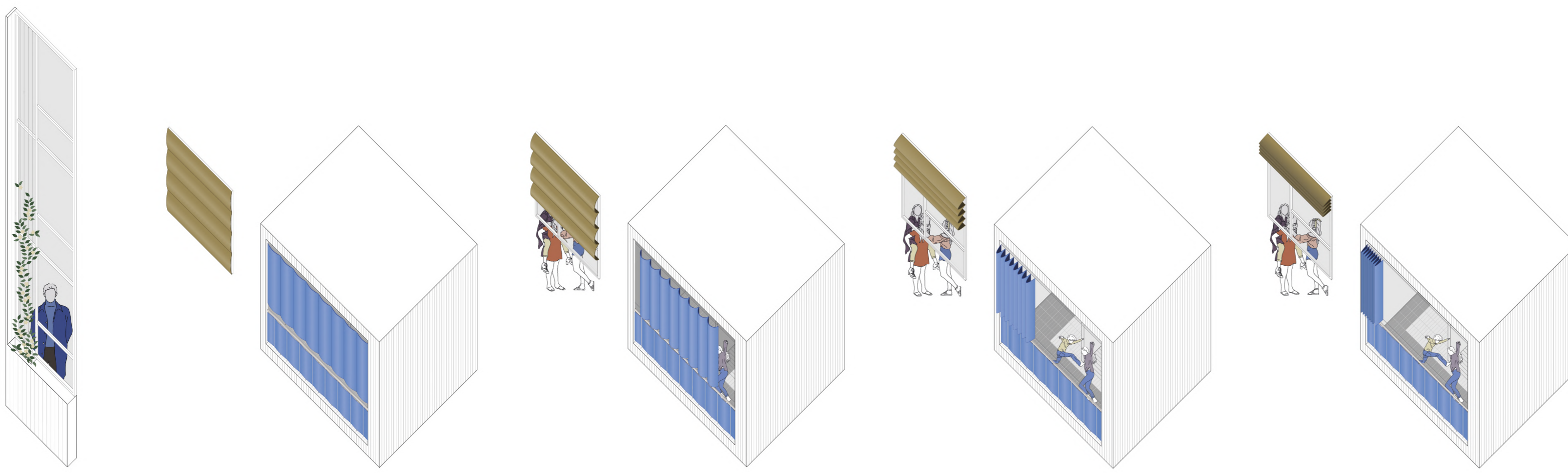


SECTION BUILDING "A"



ELEMENTS FOR SUNLIGHT CONTROL
Temperature efficiency and the building's identity.

The façade contains plant and textile elements that help to control the entry of light and, therefore, the energy consumption of the housing units.



THE SURROUNDINGS
Fuenlabrada.



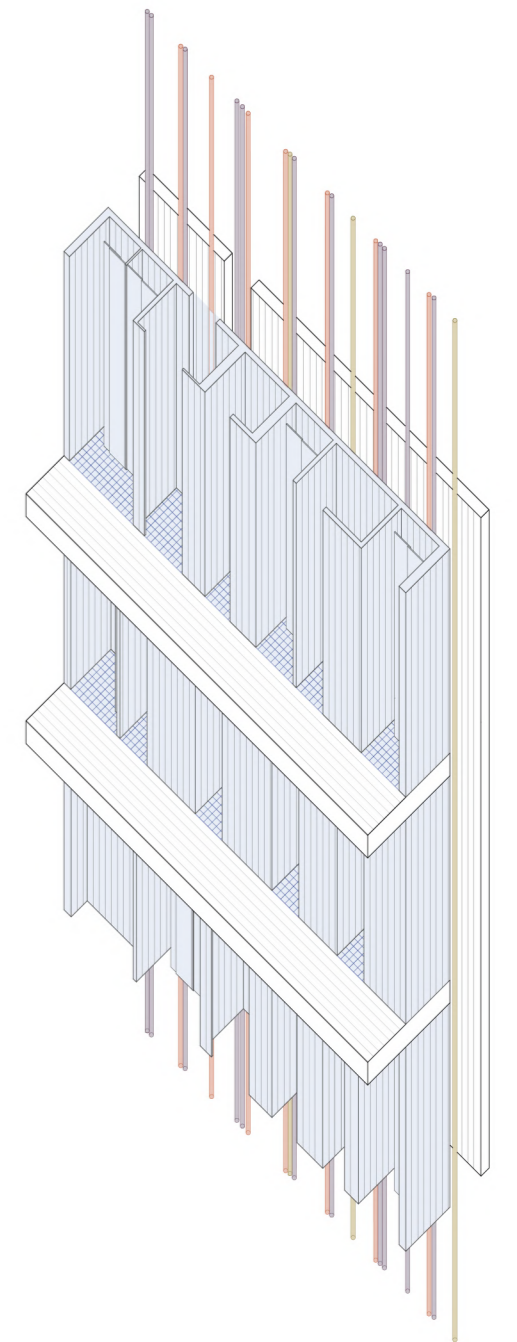
WALL OF INSTALATIONS
General outline.

The different housing units have been designed with a large perimeter wall that contains all the wet rooms and vertical conduits needed for the installations.

facilities in a more effective and efficient way.

In addition, this system makes it possible to combine the different housing units as it eases the construction, commissioning and future maintenance.

The wall defines the different rooms of the living space and allows to regulate all the

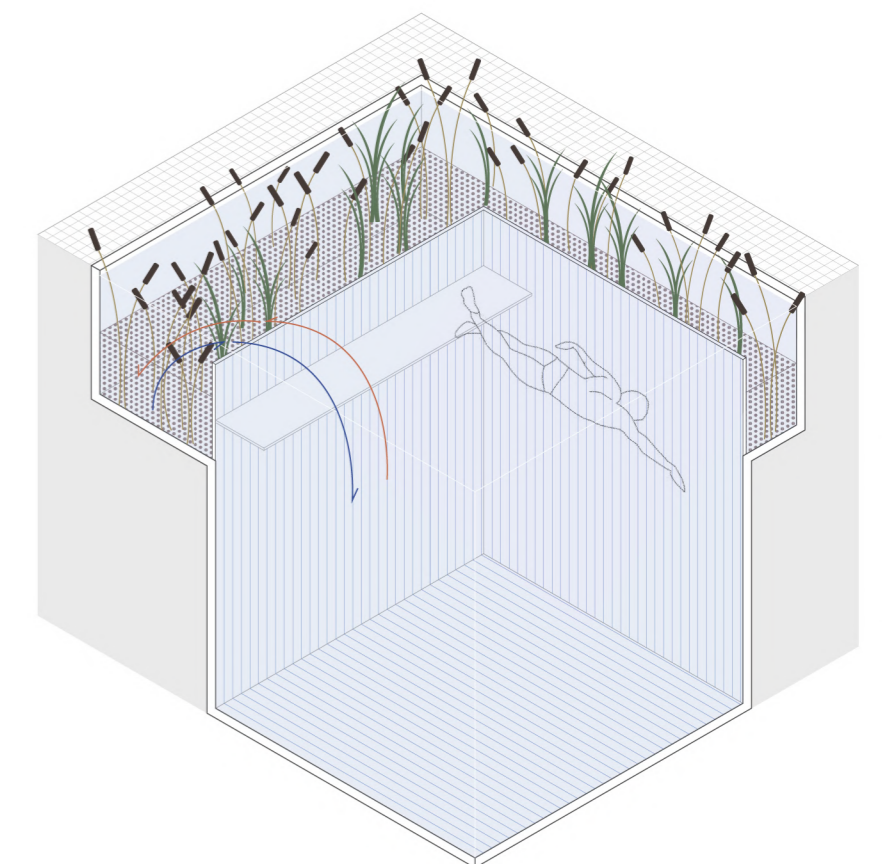


NATURAL SWIMMING POOL
Natural filtration through plants.

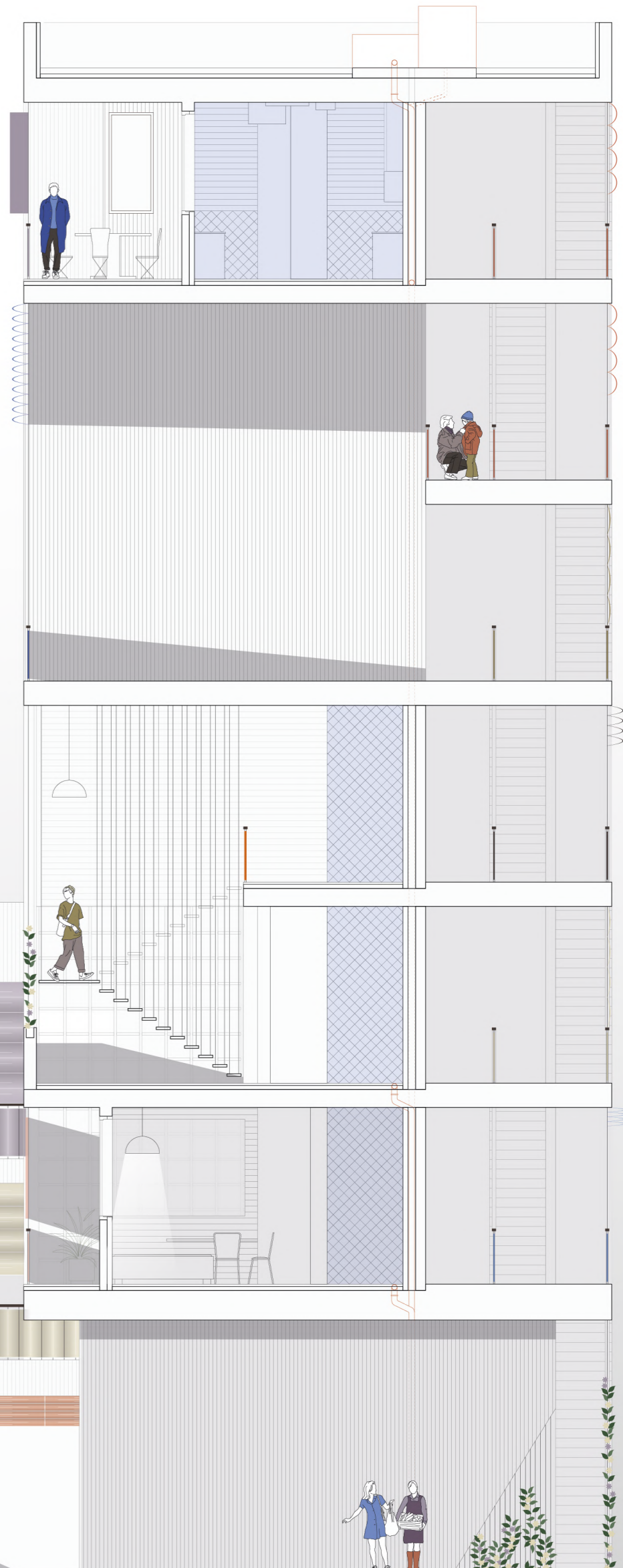
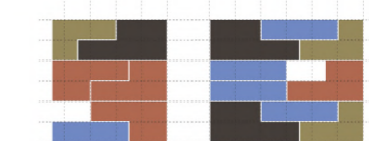
A natural swimming pool is able to purify and clean bathing water without any chemical use. The used water flows into the 'regeneration zone' where it is filtered through layers of gravel and plants.

harmful bacteria in 'exhaust' water and converting it into nutrients for plant growth.

Once the water is sufficiently purified it is pumped out of the regeneration zone and back into the swimming zone. The regeneration zone provides a balanced ecosystem by breaking down



SECTION BUILDING "B"



SECTION BUILDING "B"

